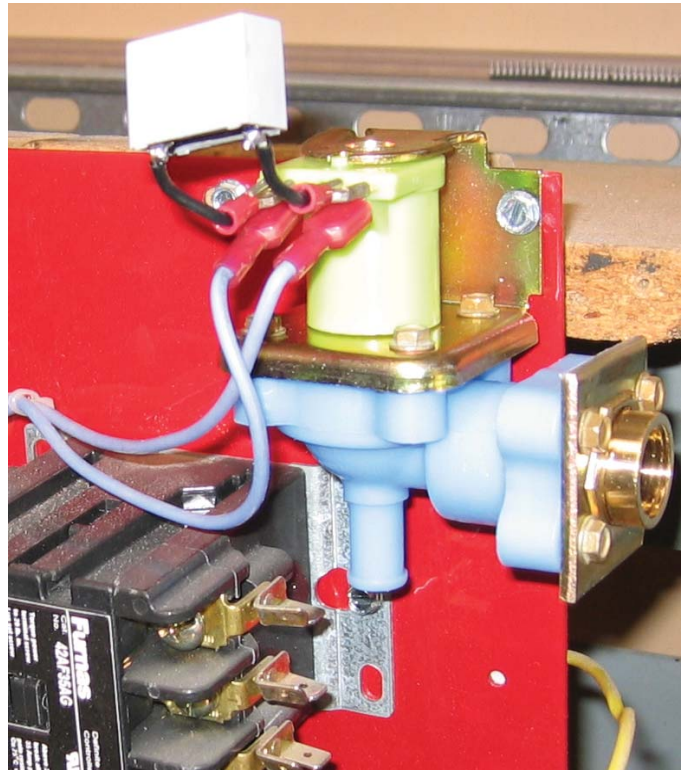


DESCRIPTION: #3078
Jumper Capacitor Wire Assembly for Water Solenoid



1. Shut off Main electrical Breaker
2. Remove two (2) Blue Wires from Water Solenoid Valve Quick Connect Terminals
3. Install two (2) Blue Wire onto Piggyback Terminals on Jumper Capacitor
4. Install Jumper Capacitor Piggyback Terminals onto Water Solenoid Valve Quick Connect Terminals
5. Turn on Main Electrical Breaker

READ AND SAVE THESE INSTRUCTIONS